

System technology

Seapress

CuNi - piping system with press connection technology for seawater, suitable for CuNi system pipes



viega





Index

PIPING	3
ELBOWS	4
TEE'S	5
COUPLINGS / REDUCERS	6
THREADED ADAPTERS / UNIONS	7
FLANGES / STUB ENDS	8
ACCESSORIES	9
THREADED VALVES	10
FLANGED VALVES	11
FIRE PROTECTION SYSTEM	12
TOOLS	13

System technology

Step by step practice oriented

The permanent connection is formed in seconds, offering all the advantages of a flameless connection.

Seapress-connections have a **SC-Contur*** (safety connection), whereby SC stands for safety contur, which clearly shows an unpressed connection during the pressure test.

The form stable system ensures a quick, clean and easy installation for various application areas.

The extensive range of fittings enable a variety of connection possibilities.

Sizes: 15, 22, 28, 35, 42, 54 76.1 ,88.9, 108 mm.

Seapress-connection is system made from CuNi10Fe1,6Mn.

Typical applications, for example in shipbuilding:

- Fire fighting and Sprinkler systems
- Sea-water cooling systems
- Bilge and ballast systems
- Deck washing systems
- Sea-water desalination systems

The electro-hydraulic crimping tool and the battery powered crimping tool provide a high strength, reliable and permanent connection.

***SC-Contur: The Seapress-system is made with the SC-Contur**

Viega
Franz Viegner II GmbH & Co. KG
Sanitär- und Heizungssysteme
Postfach 430/440
D-57428 Attendorn
Telefon (0 27 22) 61-0
Telefax (0 27 22) 61-14 15

Distributed By:
W&O Supply
3485 Evergreen Ave.
Jacksonville, FL 32206
800.962.9696 phone
904.354.5321 fax
www.wosupply.com

Piping

The Seapress system pipes consist of seamless drawn pipes of 90/10 Copper-Nickel. These pipes conform to the requirements of DIN 86019 and the material reference of DIN 2.1972 (Alloy C70600)

Water Capacity

Nominal Size (MM)	Nominal Size (Inch)	O.D. X Wall (MM)	per Ft. of Pipe (G/Per Ft)	Weight Lbs / Foot	W & O Part Number
12	1/2"	15 x 1.0	0.01	0.26	876000.015x001
20	3/4"	22 x 1.5	0.03	0.39	876000.022X001.5
25	1"	28 x 1.5	0.04	0.74	876000.028X001.5
32	1-1/4"	35 x 1.5	0.06	0.94	876000.035X001.5
40	1-1/2"	42 x 1.5	0.10	1.13	876000.042X001.5
50	2"	54 x 1.5	0.16	1.47	876000.054X001.5
65	2-1/2"	76.1 x 2.0	0.33	2.76	876000.076X002
80	3"	88.9 x 2.0	0.45	3.25	876000.088X002
100	4"	108 x 2.5	0.67	4.92	876000.108X002.5

Pipe is supplied in 6 Meter Lengths (19.8 ft)

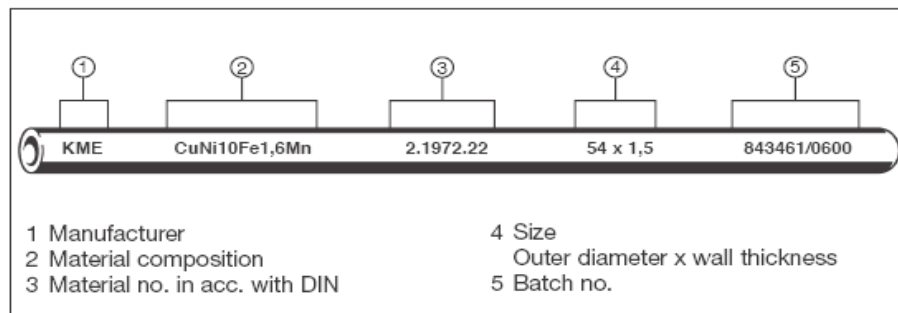


Figure 2/1: Markings on Seapress system piping

Elbows



	Size	W & O Part Number
Seapress-Elbow 90°	15	842101.015
C x C Close Rough	22	842101.022
CUNI	28	842101.028
model 0316	35	842101.035
	42	842101.042
	54	842101.054



Seapress XL-Elbow 90°	76.1	842101.076
C x C Close Rough	88.9	842101.088
CUNI	108	842101.108
model 0316XL		



Seapress-Elbow 90°	15	842107.015
FTG x C Close Rough	22	842107.022
CUNI	28	842107.028
model 0316.1	35	842107.035
	42	842107.042
	54	842107.054



Seapress XL-Elbow 90°	76.1	842107.076
FTG x C Close Rough	88.9	842107.088
CUNI	108	842107.108
model 0316.1XL		



Seapress-Elbow 45°	15	842104.015
C x C Close Rough	22	842104.022
CUNI	28	842104.028
model 0326	35	842104.035
	42	842104.042
	54	842104.054



Seapress XL-Elbow 45°	76.1	842104.076
C x C Close Rough	88.9	842104.088
CUNI	108	842104.108
model 0326XL		



Seapress-Elbow 45°	15	842109.015
FTG x C Close Rough	22	842109.022
CUNI	28	842109.028
model 0326.1	35	842109.035
	42	842109.042
	54	842109.054



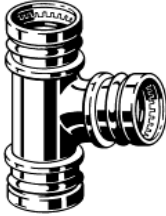
Seapress XL-Elbow 45°	76.1	842109.076
FTG x C Close Rough	88.9	842109.088
CUNI	108	842109.108
model 0326.1XL		

Tees



Seapress-Tee
C x C x C
CUNI
model 0318

Size	W & O Part Number
15	842121.015
22	842121.022
28	842121.028
35	842121.035
42	842121.042
54	842121.054
42x35	842121.042x035x042
54x35	842121.054x035x054
54x42	842121.054x042x054



Seapress XL-Tee
C x C x C
CUNI
model 0318XL

76.1	842121.076
88.9	842121.088
108	842121.108



Seapress-Tee
C x F(BSP) x C
CUNI
model 0317.2

35x3/4	842122.035x150x035
42x3/4	842122.042x150x042
54x3/4	842122.054x150x054



Seapress-Tee
C x F(NPT) x C
CUNI
model 0317.5

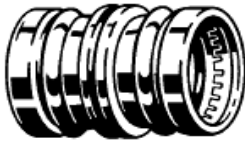
35x3/4	842122.035x150x035.NPT
42x3/4	842122.042x150x042.NPT
54x3/4	842122.054x150x054.NPT

Couplings / Reducers



Seapress-Coupling
C x C with Stop
CUNI
model 0315

Size	W & O Part Number
15	842150.015
22	842150.022
28	842150.028
35	842150.035
42	842150.042
54	842150.054



SeapressXL-Coupling
C x C with Stop
CUNI
model 0315XL

76.1	842150.076
88.9	842150.088
108	842150.108



Seapress-Coupling
C x C No Stop
CUNI
model 0315.3

15	842151.015
22	842151.022
28	842151.028
35	842151.035
42	842151.042



Seapress-Reducer
FTG x C (Bushing)
CUNI
model 0315.1

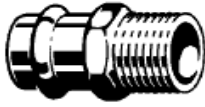
22x15	842157R.022x015
28x22	842157R.028x022
35x22	842157R.035x028
35x28	842157R.035x028
42x28	842157R.042x028
42x35	842157R.042x035
54x35	842157R054x035
54x42	842157R054x042



Seapress XL-Reducer
FTG x C (Bushing)
CUNI
model 0315.1XL

76.1x54	842157R.076x054
88.9x76.1	842157R.088x076
108x76.1	842157R.108x076
108x88.9	842157R108x088

Threaded Adapters / Unions



Seapress-Male Adaptor
C x M (BSP)
CUNI
model 0311

Size
15x1/2
22x3/4
28x1
35x1-1/4
42x1-1/2
54x2

W & O Part Number
842160.015x100
842160.022x150
842160.028x200
842160.035x250
842160.042x300
842160.054x400



Seapress- Male Adaptor
C x M (NPT)
CUNI
model 0311.5

Size
15x1/2
22x3/4
28x1
35x1-1/4
42x1-1/2
54x2

W & O Part Number
842160.015x100.NPT
842160.022x150.NPT
842160.028x200.NPT
842160.035x250.NPT
842160.042x300.NPT
842160.054x400.NPT



Seapress-Female Adaptor
C x F (BSP)
CUNI
model 0312

Size
15x1/2
22x3/4
28x1
35x1-1/4
42x1-1/2
54x2

W & O Part Number
842063.015x100
842063.022x150
842063.028x200
842063.035x250
842063.042x300
842063.054x400



Seapress- Female Adaptor
C x F (NPT)
CUNI
model 0312.5

Size
15x1/2
22x3/4
28x1
35x1-1/4
42x1-1/2
54x2

W & O Part Number
842063.015x100.NPT
842063.022x150.NPT
842063.028x200.NPT
842063.035x250.NPT
842063.042x300.NPT
842063.054x400.NPT

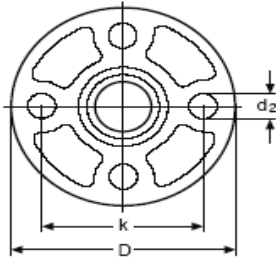
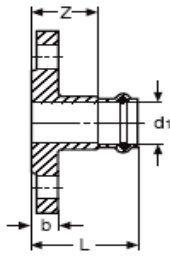


Seapress- Male Union
C x M (NPT)
CUNI
model 0365.5

Size
15x1/2
22x3/4
28x1
35x1-1/4
42x1-1/2
54x2

W & O Part Number
842528.015x100.NPT
842528.022x150.NPT
842528.028x200.NPT
842528.035x250.NPT
842528.042x300.NPT
842528.054x400.NPT

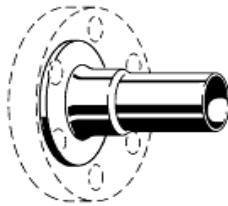
Flanges / Stub Ends



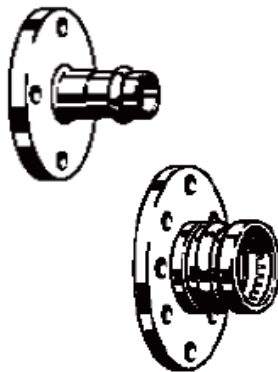
	Size	W & O Part Number
Seapress-Flange	28(1")	842171.028
C x Flange 150# ANSI	35(1-1/4")	842171.035
Bronze	42(1-1/2")	842171.042
model 2259U	54(2")	842171.054
Seapress XL-Flange	76.1(2-1/2")	842171.076
C x Flange 150# ANSI	88.9(3")	842171.088
Bronze	108(4")	842171.108
model 2259UXL		

d1	Part.-No.	Z	D	L	b	d2	k	n
28	438 975	42	115	65	16	16	79	4
35	438 982	45	140	70	16	16	89	4
42	438 999	43	150	83	16	16	98	4
54	439 002	45	165	90	18	19	121	4

n = numbers of bores in perforated circle



Seapress-Stub End	15	842170.015
FTG x Flange	22	842170.022
CUNI	28	842170.028
model 0359.3	35	842170.035
	42	842170.042
	54	842170.054
Seapress XL-Stub End	76.1	842170.076
FTG x Flange	88.9	842170.088
CUNI	108	842170.108
model 0359.3XL		



Seapress- Metric Flange	28	849170.028
C x Flange DIN PN16	35	849170.035
Bronze	42	849170.042
model 2259	54	849170.054
Seapress XL-Metric Flange	76.1	849170.076
C x Flange DIN PN16	88.9	849170.088
Bronze	108	849170.108
model 2259XL		

Accessories



	Size	W & O Part Number
Seapress- O-ring EPDM	15	842101.015.EPDM
	22	842101.022.EPDM
Max Temp.230°F	28	842101.028.EPDM
model 2289	35	842101.035.EPDM
Standard O-Ring	42	842101.042.EPDM
Services: Water, Hot & Cold	54	842101.054.EPDM
	76.1	842101.076.EPDM
	88.9	842101.088.EPDM
	108	842101.108.EPDM



Seapress- O-ring Buna-N (NBR)	15	842ORING.015
	22	842ORING.022
Max Temp.180°F	28	842ORING.028
model 2287	35	842ORING.035
Services: Oil, Fuel, Diesel, Lube & Cold Water	42	842ORING.042
	54	842ORING.054
	76.1	842ORING.076
	88.9	842ORING.088
	108	842ORING.108



Seapress- O-ring Fluorocarbon (FKM)	15	842ORING.015.VITON
	22	842ORING.022.VITON
Max Temp.300°F	28	842ORING.028.VITON
model 2286	35	842ORING.035.VITON
Services: Chemicals, High Temperatures & Hydrocarbons	42	842ORING.042.VITON
	54	842ORING.054.VITON
	76.1	842ORING.076.VITON
	88.9	842ORING.088.VITON
	108	842ORING.108.VITON

Threaded Valves

Threaded Valves can be used from 1/2" to 2" NPS

Valves are Installed with

Male Thread Adaptors model 0311.5

Or Male Union Adaptor model 0365.5

Adaptors are Threaded into Valve Prior to Crimp Installation

Valve Adaptors



Male Adaptor
#842169.SIZE. NPT



Male Union Adaptor
#842528.SIZE. NPT

Ball Valves NPT 1/2" - 2"



2-Piece Bronze Ball Valve # 375202.SIZE



3-Piece Bronze Ball Valve # 375302.SIZE

Gate Valves



150# Brz Gate R/S
#112101.SIZE

Globe Valves



150# Brz Globe
#112301.SIZE

Check Valves



150# Brz Swing Check
#112501.SIZE

Strainers



150# BRZ Y-Strainer
3690102.SIZE



3485 Evergreen Ave.
Jacksonville, FL 32206
800.962.9696 phone
904.354.5321 fax
www.wosupply.com



Flanged Valves

Flanged Valves can be used from 1" to 4" NPS

Butterfly Valves 2"-4"

Valves Mated with Bronze Flanges model 2259U
Valves can be mounted in-line after Flanges are Crimped
Valves are offered with Manual or Actuated Operators



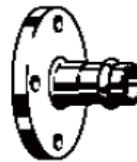
#842171.SIZE
150# Flange
Adaptor

Ductile Iron Lug Style Body
Alum.Bronze Disc
USCG Category A
313202.Size

Ductile Iron Wafer Style Body
Alum.Bronze Disc
USCG Category A
#313102.Size

Flanged Gate,Globe,Check Valves 2"-4"

Valves Mated with Bronze Flanges model 2259U
Mount Flanges on Valve Prior to Crimping In-line



#842171.SIZE
150# Flange
Adaptor

150# Bronze Gate U/B FFG Brz Trim
#052102.SIZE



150# Bronze Swing Check FFG Brz Trim
#052503.SIZE



150# Bronze Globe U/B FFG Brz Trim
#052302.SIZE



3485 Evergreen Ave.
Jacksonville, FL 32206
800.962.9696 phone
904.354.5321 fax
www.wosupply.com



Fire Protection System

Sprinkler Heads

Mounted In-line with Outlet Tee model 0317.5

Sprinkler Head #513502.100
Outlet Tee #842122.SIZE
Female Adaptor # 842063.SIZE



Hose Valves



150# Brz Hose Angle
#055403.300
#055403.450
#842171.042
#842171.076

Size X Hose Thread
1-1/2" 150# x NST Thread
2-1/2" 150# x NST Thread
1-1/2" Flange FFG x Crimp
2-1/2" Flange FFG x Crimp



150# Brz Hose Globe
#055303.300
#055303.450
#842171.042
#842171.076



3485 Evergreen Ave.
Jacksonville, FL 32206
800.962.9696 phone
904.354.5321 fax
www.wosupply.com



Tools

Tools fit Seapress, Profipress and Sanpress

W & O Part Number	Brand	Model #	Catalog #	Description
839.T76807	RIDGID	CT400	76807	Propress Crimp Tool (only) 115VAC
839.ACC90852	RIDGID	CT400	90852	Carrying Case Only for CT400 Tool
839.BT12153	RIDGID	320-E	12153	Battery Crimp Tool w/ Case,
842.J22996.012-035	VIEGA	2299.6	313012	Battery Charger (115V) 2 Batteries
842.J22994.042-054	VIEGA	2299.4	262211	12-35 MM Jaw Set w/ Case
842.J22973.076-108	VIEGA	2297.3XL	362959	42-54 MM Jaw Set w/ Case
842.2292.012	VIEGA	2299.2	283353	76, 88.9, 108 Jaw Set w/ Ring & Case
842.22992.015	VIEGA	2299.2	149451	12 MM Jaw
842.22992.018	VIEGA	2299.2	283346	15 MM Jaw
842.22992.022	VIEGA	2299.2	148881	18 MM Jaw
842.22992.028	VIEGA	2299.2	150815	22 MM Jaw
842.2292.035	VIEGA	2299.2	152543	28 MM Jaw
842.22992.042	VIEGA	2299.2	153465	35 MM Jaw
842.22992.054	VIEGA	2299.2	193812	42 MM Jaw
				54 MM Jaw

*Note: Pneumatic and Hydraulic operated tools are available.

The **CT-400** uses the latest in integrated smart features to assure the tool provides consistent, reliable crimps. A shutoff switch prevents operation if the jaw set is not locked in position; likewise the tool will not perform a crimp if the wrong jaw size is used. To insure reliable performance, built-in electronics automatically give a signal after 20,000 crimps indicating the tool is approaching the recommended limit for preventative maintenance and recalibration. If not recalibrated within another 2,000 crimps, the tool will not start until calibration is preformed.

Technical Specifications:

Model: CT-400
Motor: 120v, 5.2A Hydraulic Ram
Output: 7,200 lbs.
Crimp Force: 35,000 lbs.
Weight: 15.6 lbs. (without jaws)

The Model 320-E features the newest in crimp tool technology - a swivel barrel, the latest battery technology and advanced diagnostics. The 320-E delivers the durability you expect from RIDGID in a compact design to fit in the tightest spots on your small jobs and powerful enough to handle your major construction projects

Technical Specifications:

Model: 320-E
Motor: 14.4v DC
Output: 7,200 lbs.
Crimp Force: 35,000 lbs.
Weight: 10.5 lbs. (without jaws, with battery)



3485 Evergreen Ave.
 Jacksonville, FL 32206
 800.962.9696 phone
 904.354.5321 fax
 www.wosupply.com

